

ELEMENTS TO CONSIDER WHEN DESIGNING A GLOBAL MONITORING PLAN FOR MERCURY

GEF Project ID: 5409



Objectives:

- To harmonize approaches for monitoring and to strengthen the capacity for mercury analyses, in humans and the environment.



Implementing partners of the GEF project are:



- UN Environment, Chemical and Health Branch;
- Italian National Research Council - Institute of Atmospheric Pollution Research (CNR-IIA); and
- World Health Organization, Regional Office for Europe - European Centre for Environment and Health (WHO ECEH).

You can find more information there: Report to Minamata Convention of the Global Monitoring Plan for Mercury.
Please go to our website or use the following QR-code:



<https://www.unenvironment.org/explore-topics/chemicals-waste/what-we-do/mercury/mercury-monitoring>

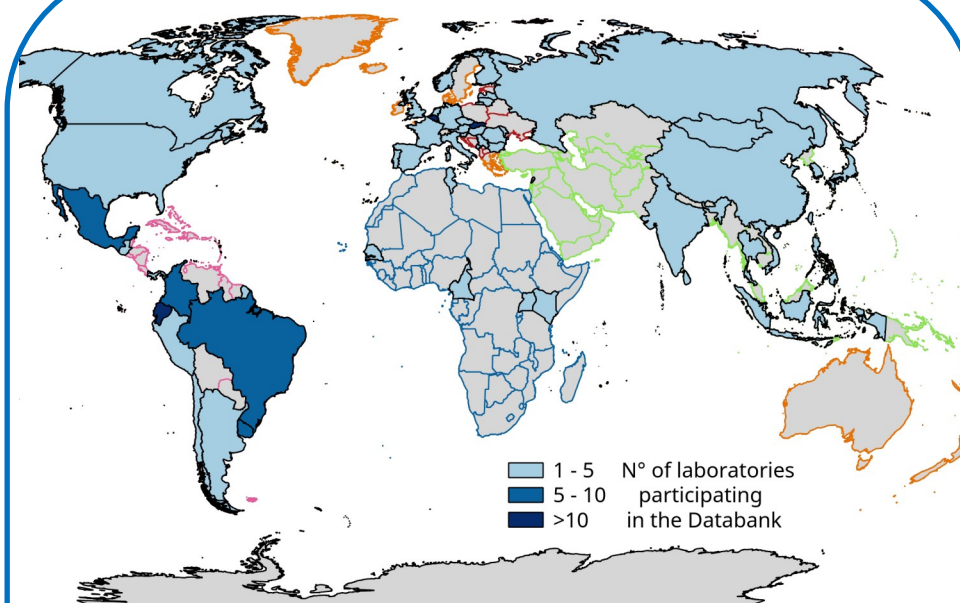
ELEMENTS TO CONSIDER WHEN DESIGNING A GLOBAL MONITORING FOR MERCURY

GEF Project ID: 5409



WORLDWIDE CAPACITY TO ANALYSE MERCURY

Laboratories participating in the Mercury Laboratory Databank (total:185 labs.)



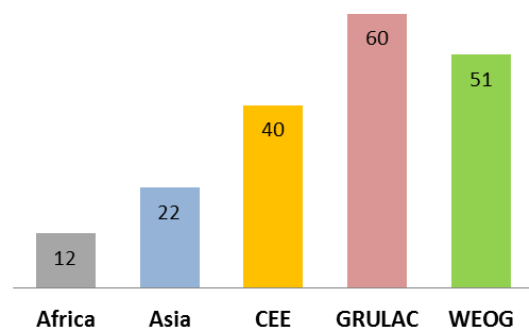
Laboratories with Quality Control/Quality Assurance

	Quality Control system	Quality Assurance program
Yes	182	152
No	2	31
Total	184	183

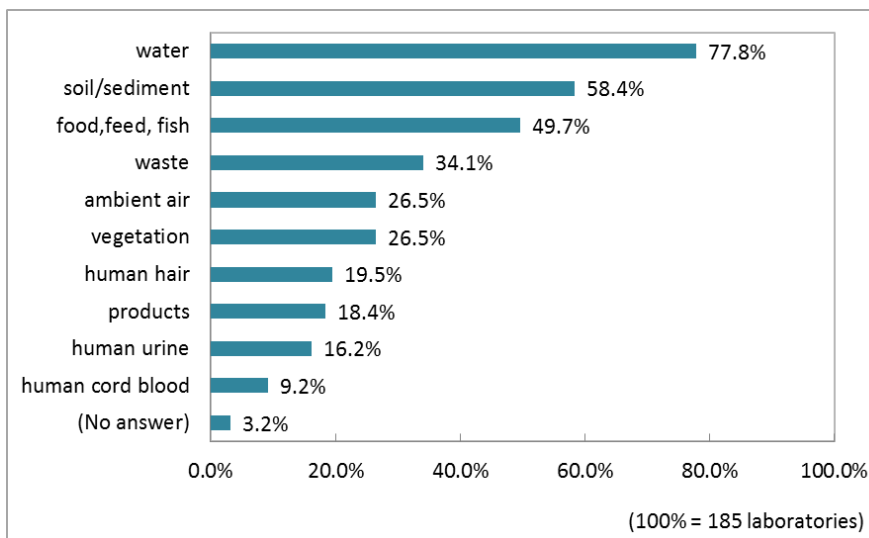
To see some results please turn the page



Number of Laboratories per region participating in the Database



Percentage of Laboratories sampling each matrix



You can find more information the: Report to Minamata Convention of the Global Monitoring Plan for Mercury. Please go to our website or use the following QR-code:



<https://www.unenvironment.org/explore-topics/chemicals-waste/what-we-do/mercury/mercury-monitoring>

PROJECT COMPONENTS AND OUTPUTS

The project is divided into **four components**. The first three components and their outputs are described in the figure below. Once all of these activities have been carried out successfully, a last phase will open, which will identify lessons-learned and provide recommendations for future activities.



COMPONENT 1 - Review of existing information on human exposure to and environmental concentrations of mercury



COMPONENT 2 - Development of a monitoring plan on presence of mercury in ambient air



COMPONENT 3 - Development of a monitoring plan on human exposure to mercury



Final workshop to be held on 12-13 December 2017, an opportunity to discuss results and lessons-learned !

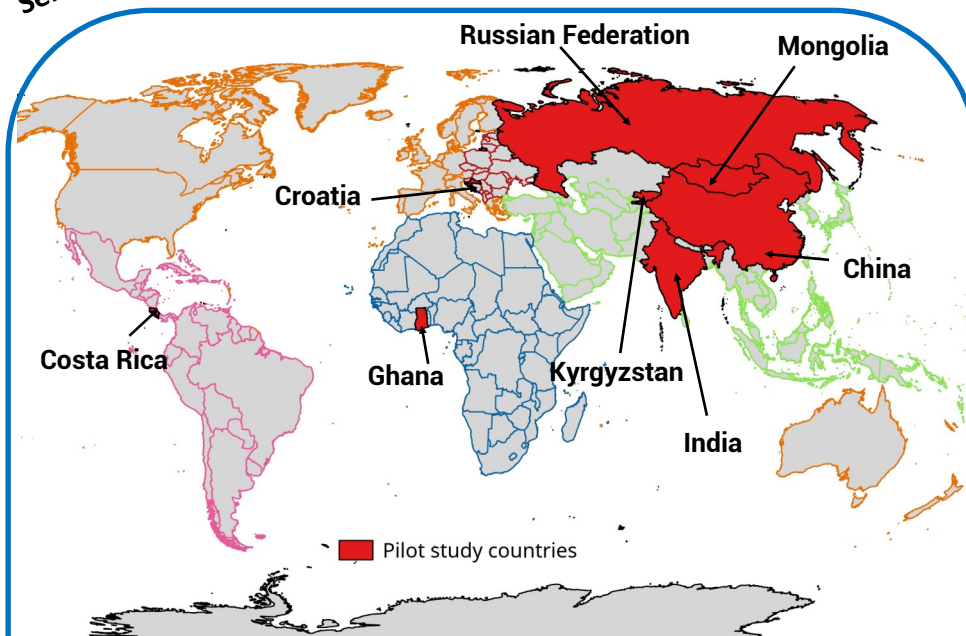


ELEMENTS TO CONSIDER WHEN DESIGNING A GLOBAL MONITORING PLAN FOR MERCURY

GEF Project ID: 5409



Selected Pilot Study Sites for Human Bio-Monitoring (HBM) of Mercury

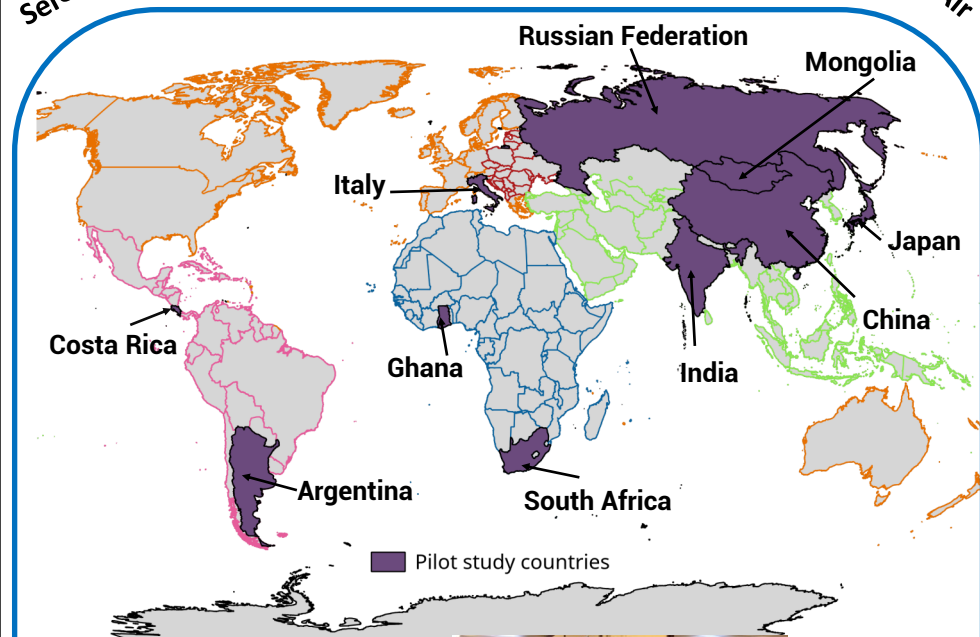


ELEMENTS TO CONSIDER WHEN DESIGNING A GLOBAL MONITORING PLAN FOR MERCURY

GEF Project ID: 5409



Selected Pilot Sampling Sites for Passive Monitoring of Mercury in the Air



PASSIVE AIR SAMPLING AS A TOOL TO MEASURE MERCURY IN AMBIENT AIR

Passive sampler



Microporous nylon fabrics

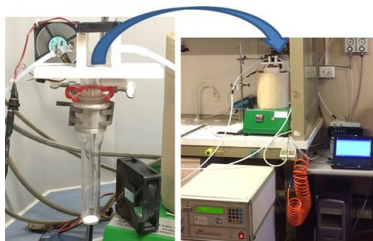
Installation of the Sampler



Passive sampler deployed in the field



Chemical Analysis of Mercury



Collection and shipment of air samples



For further details about passive air sampling, see a video by the Italian National Research council - Institute for Atmospheric Pollution Research (CNR - IIA) at: <http://www.ia.cnr.it/progetto-unep-gef/>, or use the QR-code:



You can find more information the: Report to Minamata Convention of the Global Monitoring Plan for Mercury. Please go to our website or use the following QR-code:

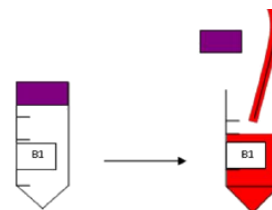


<https://www.unenvironment.org/explore-topics/chemicals-waste/what-we-do/mercury/mercury-monitoring>

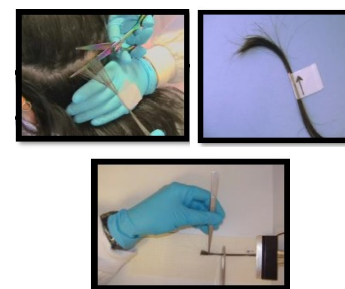
HUMAN BIOMONITORING AS A TOOL TO ASSESS THE EXPOSURE TO MERCURY (WHO harmonized approach)

Recommended Matrices for Human Biomonitoring:

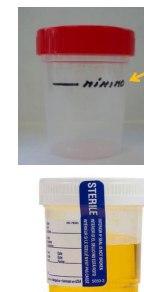
blood/cord blood



Hair



Urine



Chemical Analysis of the concentration of Mercury



For further details on hair sampling please see a video developed by the National Health Institute Carlos III at: <http://portal-videos.isciii.es/?p=249>, or use the QR-code:



You can find more information the: Report to Minamata Convention of the Global Monitoring Plan for Mercury. Please go to our website or use the following QR-code:



<https://www.unenvironment.org/explore-topics/chemicals-waste/what-we-do/mercury/mercury-monitoring>